

HdM GALLERY

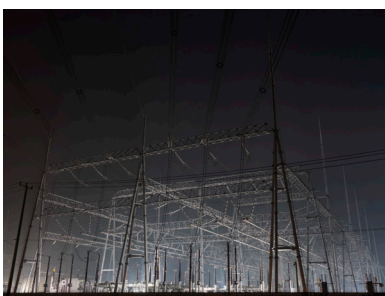
HU WEIYI | THE WINDOW BLIND 2019.05.11 – 2019.06.15



Easy Obtainment, 135 × 112 × 120 cm, 2019



The Window Blind 3, 174.5 × 113.5 × 25 cm, 2019



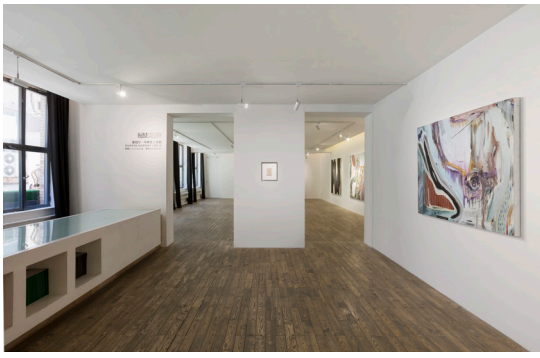
Belief, 97.5 × 130 cm, 2019

HdM GALLERY Beijing Space is delighted to present our forthcoming exhibition ‘The Window Blind’, a solo show of artist Hu Weiyi. This is Hu’s first cooperation with HdM GALLERY and his second solo show in Beijing after his solo show at the UCCA. The exhibition will showcase 10 new works, including videos, installations and photographs. It will open on March 11th and last until June 15th 2019.

Hu Weiyi’s works involve multiple facets, and he is apt at combining various media in his works, especially photography, video and installation. The works in the exhibition were all produced this year; he regards the urban space he lives in as his main source of inspiration, and he taps into the core of the cultural development of our society with a unique approach, thus making the work turn to more tridimensional and advanced social discussions.

In this exhibition, Hu Weiyi brought everyday social scenes into his lens, including spacious buildings with half-open windows, twinkling city illuminations, aggressive traffic lights surrounded by withered tree branches, strange buildings with clothes hanging out etc.; they form ordinary yet strange urban landscapes. Landscapes that exist calmly and objectively, but are unexpectedly subjected to the forced intervention of other daily objects, such as blockage, seizure, obstruction, cleaning and so on. But these actions have no consequences, they are an end unto themselves, so that they dance with each other, like a meaningless game of vacuity. This sense of powerlessness, concomitant with nothingness, also reflects the existential state of each individual in the city. People endure a power that can integrate a rule and a standardized lifestyle, though they are not capable of suppressing their inner desire. The city is a mixture of power and desire, which makes it impossible for each living individual to be rid of the gravitational pull of these two poles. It is an exhausted urban dance in which each living object is involved, and becomes an indispensable interconnection of the hierarchy, systematically exporting itself to the same process. Hu Weiyi’s creations are based on such a tension of contradictions and tears: he presents a grotesque modern city fable by capturing the living posture of different objects in the city, thus incorporating his private desire on high-rise buildings.

Hu Weiyi, born in 1990 in Shanghai, graduated from the China Academy of Art in 2013 with a bachelor’s degree, then studied at the School of Intermedia Art, the China Academy of Art, and received a master’s degree in 2016. He now lives and works in Shanghai. His work has been exhibited by numerous institutions and galleries including The Helmhaus Zürich, Yuz Museum, Power Station of Art, Long Museum, MoCA Shanghai, Guang Dong Times Museum, Minsheng Art Museum, CAFA Art Museum, Hong Kong Arts Centre, etc. He was nominated for the 2nd Art Sanya Huayu Youth Award in 2014.



Beijing Space



London Space



HdM GALLERY

HdM GALLERY is a leading contemporary gallery with a special focus on Contemporary Chinese Art. Founded on a passion for Chinese art, the first HdM GALLERY was opened in Beijing in 2009 - the success of which leading to a subsequent gallery opening in Hangzhou in 2013. Founders and partners Hadrien de Montferrand, Laurent Dassault, and Olivier Hervet have garnered over 10 years of experience and understanding of the art market in China, witnessing first-hand China's rapidly evolving art ecosystem.

HdM GALLERY proudly represents a wealth of emerging Chinese artists among which are He An, Chen Han, Hao Shiming, and Wang Yi. Having established a reputation as a leading gallery in the field of Chinese contemporary art - working with established Chinese artists such as Mao Yan and Liu Xiaodong - HdM GALLERY is dedicated to using their expertise to nurture and develop the careers of these new artists. Exhibiting regularly at prominent fairs such as Art Brussels, Photo London and Art Basel Hong Kong, HdM introduces contemporary Chinese artists to a worldwide client base and broadens perceptions, understanding and appreciation of these engaging contemporary works.

Though initially specialising exclusively in Chinese Art, the ethos of the gallery has since seen a development. HdM has evolved to work with noted Western artists - often exhibiting their works alongside their Chinese contemporaries, bridging the Chinese and Western art markets through this previously unexplored approach. The result is an exhibition with a unique and thought-provoking fusion of influences and on this topic, founder Hadrien de Montferrand defines the identity of the gallery as 'an international gallery with strong Chinese DNA'. Western artists such as Martin Kollar, Ivan Messac, Romain Bernini, Manuel Mathieu and Barthélemy Toguero are currently represented by HdM GALLERY.

FOUNDERS

Hadrien de Montferrand has long served as a bridge between the Art worlds of China and Europe. His more than seven years at various auction houses and Art institutions included roles as marketing director for ARTCURIAL, the largest French auction house, and for the Ullens Center for Contemporary Art in Beijing.

Laurent Dassault, an entrepreneur to the core, helped to found Arquana, continental Europe's leading horse auction house, in 2006. His entrepreneurial spirit extends to his charitable activities as well: Laurent serves as the administrator of the "Friends of Pompidou Museum's Association" in Paris, and heads the development committee for the auction house ARTCURIAL.

Olivier Hervet graduated with an MA in Classics from Oxford University in 2008. After working for Hadrien de Montferrand Gallery since its inception in 2009 where he developed the gallery's network of young collectors, he became a partner in 2012 with the goal of opening a second space in China.



Gallery Contact

+86 10 59789320

press@hdmgallery.com

798 Art District, No.4 Jiuxianqiao Lu
Chaoyang District, Beijing, China

Duration: 11 May 2019 - 15 June 2019

Opening Hours: Tuesday - Saturday from 11am to 6pm
(Or by appointment)

www.hdmgallery.com



WeChat